

1/4" to 2" NPT; Stainless Steel



Advantages/Benefits



- ▶ Integrated pilot valves, position feed-back and limit switches available



- ▶ Customized system solutions with Burkert valves & sensors



- ▶ With ASI-bus interface
- ▶ Hazardous location – Namur valves available as pilots

Design/Function

The ball valve family Type 265X is designed for any kind of application in the process industry. The ball valve consists of two variable modules, the valve body and the actuator.

Two body designs both in stainless steel are available as follows:

- The two-piece valve body is the economic solution in applications with low cycle rates and uncritical sealing conditions, slow and few changes of pressure and temperature of the fluid.
- The three-piece valve body for industrial applications is specifically equipped with a two level sealing system to get superior tightness in the stem area during temperature and pressure variations. Maintenance and changes of seals and seat can be done on line, while keeping the valve on the pipe.

The quarter turn for opening the valve can be done by a hand lever, by a pneumatic

actuator or by a compact high performance electric actuator, which all can be used on the two-piece and on the three-piece valve body, depending on the application and on the kind of control of the process.

This modular concept allows ball valves to be built for any degree of automation and any kind of application in the process industry.

A system can be completed with pilot valves for the operation of the pneumatic actuator, a compact position feedback, a control head, optional with ASI-bus, for ON/OFF control functions and an on-place stand-alone controller (position control or process control) for continuous control processes.

An Easy LINK can be built with any kind of sensor. The electric motor actuator has a standard signal input (4 - 20 mA) to be connected and controlled directly by a PLC.

Applications

Fluids

- Neutral gases and fluids
- Ultrapure water
- Slightly aggressive fluids
- Slightly contaminated liquids

Applications

- Water treatment / ozoning systems
- Slow processes / tank farming in beverage and pharmaceutical industry
- Shut-off armatures in chemical and dyeing industry
- Textile machines



INGENIEROS ASOCIADOS DE CONTROL S.L.

Tel.: 91 383 1390
comercial@ac-sl.es

An Optional Variety of Modules for Your Choice

Electric Position Feedback 1062

Versions:

- Mechanical limit switches
 - Silver contact
 - Gold contact
- Inductive limit switches
 - 2-wire
 - 3-wire
 - Namur EEx-i



Pneumatic Actuator Type 2050

Actuator sizes [mm]:

- E: \varnothing 63
- G: \varnothing 100

Actuator material:

- PA (Polyamide)

Control functions:

- I: double acting
- A: normally closed by spring (only size G)



Electric Actuator

Actuator sizes:

- 0: 10/12 Nm
- 1: 25 Nm
- 2: 100 Nm

Signals:

- ON / OFF
- 4 - 20 mA

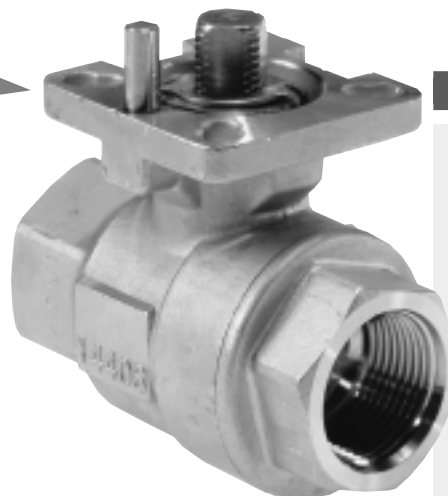


Modules to be
ball valve system for
Pre-assembled system,
into production

Hand Levers

Versions:

- 2-piece valve
 - 304 SS with vinyl handle sleeve and locking device



Valve Bodies

Body configurations (ISO):

- 2-piece valve body
- 3-piece valve body

Valve sizes [mm]:

- 10.0 2- and 3 piece
- 12.0 2- and 3 piece
- 15.0 2- and 3 piece
- 20.0 2- and 3 piece
- 25.0 2- and 3 piece
- 32.0 2- and 3 piece
- 40.0 2- and 3 piece
- 50.0 only 2-piece valve

Pilot Valve Type 6519 Namur

Functions:

- 3/2 way
- 5/2 way

Materials:

- Brass
- Stainless Steel



TOP CONTROL

Version:

- ON / OFF Control head



combined to a
the process industry.
easy to integrate
facilities.



Hand Levers

Versions:

- 3-piece valve
 - Cast 304 SS with air cushioned vinyl handle sleeve and locking device



Connections:

- G (reduced and full)
- NPT (reduced and full)
- Rc (reduced and full)
- Butt weld on request
- Socket weld on request

Materials:

- Body: Stainless Steel (A351)
- Gasket: PTFE

Technical Data (Valve Bodies)

2-Piece Body Version

- robust and economic
- blow-out proof stem design
- less changes of temperature and pressure
- low cycling rates

3-Piece Body Version

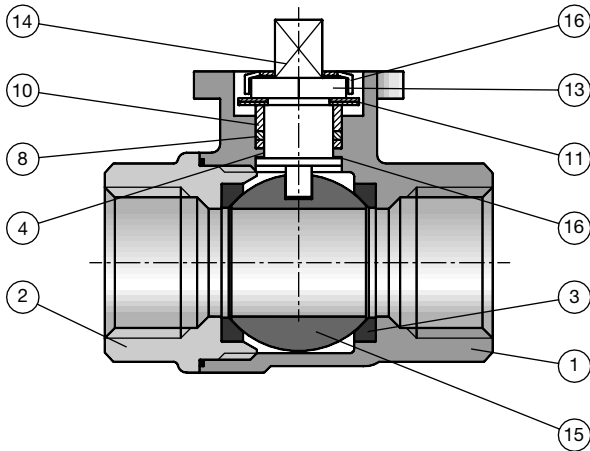
- rugged industrial design
- control section “swing away” and seats to be changed, while keeping the valve on the pipe
- bottom entry stem prevents blow-out
- self-adjusting floating ball
- encapsulated body gasket seals off any possible leak path

Operating Data (Valve Bodies)

Pressure range	0 to 230 PSI	Sealing	PTFE
Port connections	G 1/4" - G 2" 1/4" NPT - 2" NPT Rc 1/4" - Rc 2"	Fluids	Neutral gases and fluids Ultrapure water Slightly aggressive fluids Contaminated liquids
Orifice		Viscosity	max. 40 mm ² /s
2-piece version	1/4" - 2"	Medium temperature	14°F to +248°F (>248°F on request)
3-piece version	1/4" - 2"	Max. ambient temperature	14°F to 140°F

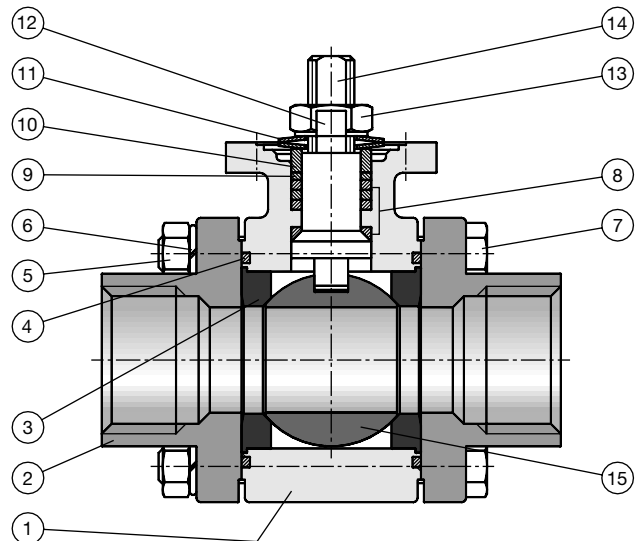
Materials (Valve Bodies)

2-Piece Body Version



	DIN Specification	ASTM/SUS Specification
1. Body	316 SS	ASTM A351 Grade CF8M
2. End cap	316 SS	ASTM A351 Grade CF8M
3. Seat	RPTFE	RPTFE
4. Body gasket	PTFE / RPTFE	PTFE / RPTFE
5. Nut	304 SS	SUS304
6. Washer	304 SS	SUS304
7. Bolt	304 SS	SUS304
8. Packing Set	PTFE	PTFE

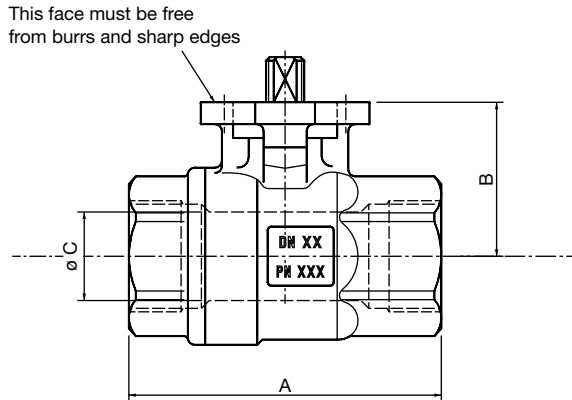
3-Piece Body Version



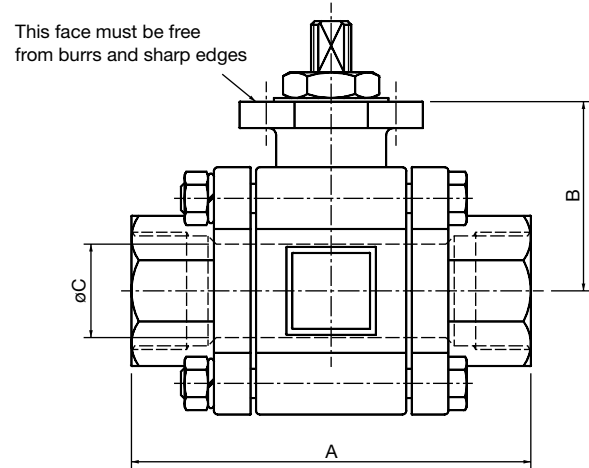
	DIN Specification	ASTM/SUS Specification
9. Bushing	PTFE + graphite	PTFE + graphite
10. Gland	304 SS	SUS304
11. Belleville washer	301 SS	SUS301
12. Lock saddle	304 SS	SUS304
13. Stem nut	304 SS	SUS304
14. Stem	316 SS	SUS316
15. Ball	316 SS	SUS316
16. Thrust washer	PTFE	PTFE

Dimensions [mm] (Valve Bodies)

2-Piece Body Version



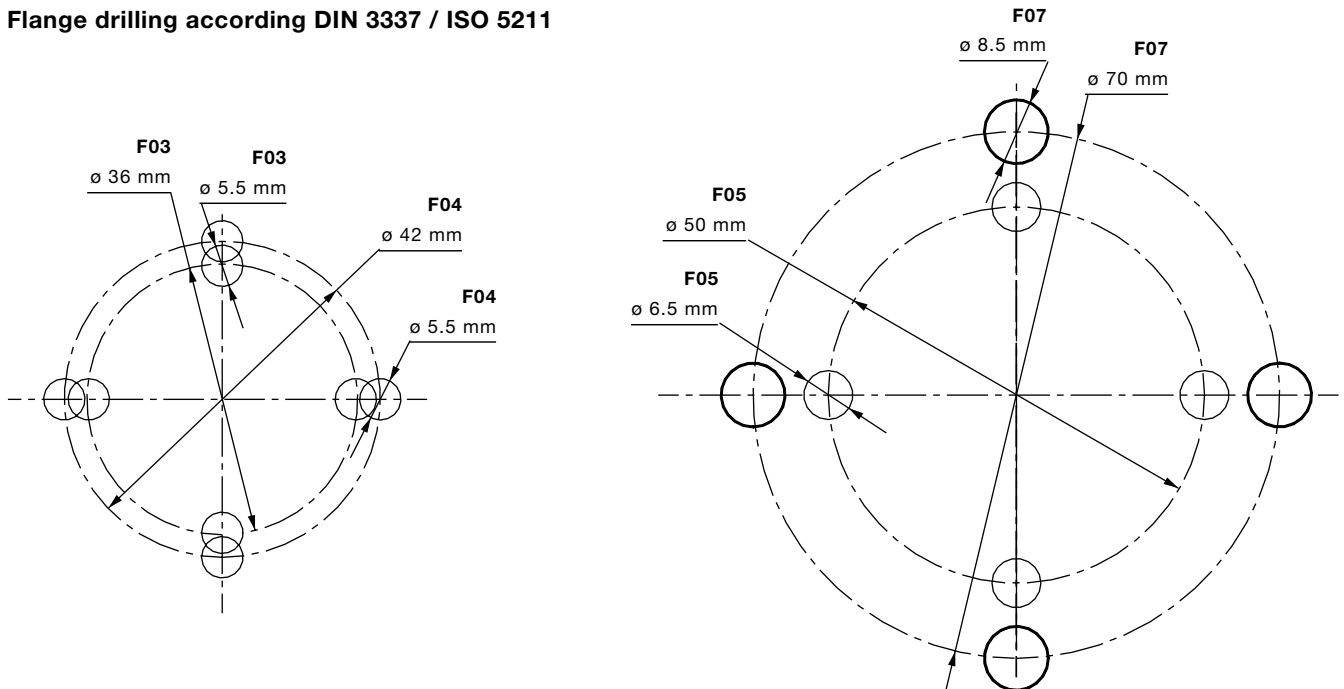
3-Piece Body Version



Port Connection [inch]	Flange ISO 5211	Dimensions [mm]		
		A	B	ø C
NPT 1/4	F03	50.0	34.0	11.6
NPT 3/8	F03 / F04	60.0	34.0	12.7
NPT 1/2	F03 / F04	75.0	35.5	15.0
NPT 3/4	F04 / F05	80.0	39.0	20.0
NPT 1	F04 / F05	90.0	45.0	25.0
NPT 1-1/4	F04 / F05	110.0	50.0	31.8
NPT 1-1/2	F04 / F05	120.0	56.0	38.0
NPT 2	F05	140.0	67.5	50.8

Port Connection [inch]	Flange ISO 5211	Dimensions [mm]			
		A	B	ø C	
NPT 1/4	F03	66.6	27.7	10.0	
NPT 3/8	F03	66.6	27.7	12.7	
NPT 1/2	F04	71.6	38.2	15.0	
NPT 3/4	F04	96.6	41.6	20.0	
NPT 1	F05	109.0	51.6	25.0	
NPT 1-1/4	F05	117.0	55.0	31.8	
NPT 1-1/2	F07	129.0	66.0	38.1	

Flange drilling according DIN 3337 / ISO 5211



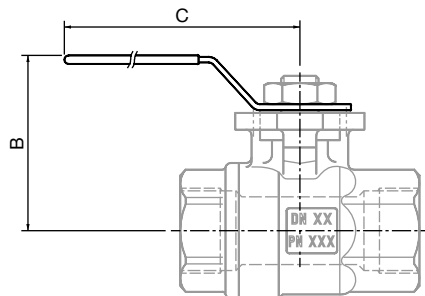
Materials (Actuator - Manual Operation)

Handles for 2- and 3-Piece Ball Valve

- SS304 with vinyl plastic cover

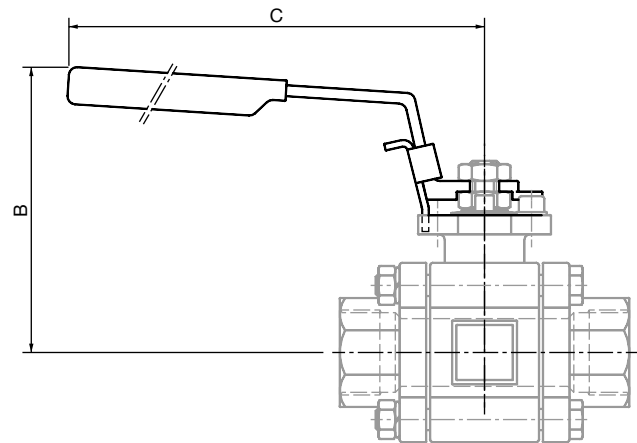
Dimensions [mm] (Actuator - Manual Operation)

2-Piece Body Version Type 2651



Orifice DN [mm]	Dimensions [mm]	
	B	C
10.0	50.0	96.0
12.0	53.0	96.0
15.0	53.0	96.0
20.0	64.0	125.0
25.0	66.0	125.0
32.0	79.0	170.0
40.0	83.0	170.0
50.0	94.0	190.0

3-Piece Body Version Type 2654



Orifice DN [mm]	Dimensions [mm]	
	B	C
10.0	63.5	115.0
12.0	63.5	115.0
15.0	82.0	130.0
20.0	86.0	130.0
25.0	98.0	165.0
32.0	100.0	165.0
40.0	116.0	200.0

Specifications / Ordering Chart (Actuator - Manual Operation)

Orifice DN [mm]	Port Connection [inch]	Pressure Range [PSI]	C _v -Rating		Weight		Item No.	
			Full Bore	Reduced Bore	Full Bore [lb.]	Reduced Bore	Full Bore	Reduced Bore

2-Piece Ball Valve Type 2651

10.0	NPT 1/4	0 - 230	8.2	–	1.32	–	432 073 P	–
12.0	NPT 3/8	0 - 230	10.6	–	1.65	–	432 074 Q	–
15.0	NPT 1/2	0 - 230	12.9	–	1.87	–	432 075 R	–
20.0	NPT 3/4	0 - 230	30.6	–	3.19	–	432 076 J	–
25.0	NPT 1	0 - 230	45.9	–	4.40	–	432 077 K	–
32.0	NPT 1-1/4	0 - 230	81.0	–	6.06	–	432 078 U	–
40.0	NPT 1-1/2	0 - 230	121.0	–	9.03	–	432 079 V	–
50.0	NPT 2	0 - 230	235.0	–	12.12	–	432 080 K	–

3-Piece Ball Valve Type 2654

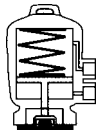
10.0	NPT 1/4	0 - 230	8.2	–	1.32	–	432 081 G	–
12.0	NPT 3/8	0 - 230	8.2	–	1.32	–	432 082 H	–
12.0	NPT 1/2	0 - 230	–	8.2	–	1.32	–	432 088 P
15.0	NPT 1/2	0 - 230	11.8	–	1.87	–	432 083 A	–
15.0	NPT 3/4	0 - 230	–	11.8	–	1.87	–	432 089 Q
20.0	NPT 3/4	0 - 230	32.9	–	3.19	–	432 084 B	–
20.0	NPT 1	0 - 230	–	32.9	–	3.19	–	432 090 M
25.0	NPT 1	0 - 230	47.0	–	4.40	–	432 085 C	–
25.0	NPT 1-1/4	0 - 230	–	47.0	–	4.40	–	432 091 A
32.0	NPT 1-1/4	0 - 230	83.5	–	6.06	–	432 086 D	–
32.0	NPT 1-1/2	0 - 230	–	83.5	–	6.06	–	432 092 B
40.0	NPT 1-1/2	0 - 230	121.0	–	9.03	–	432 087 E	–
40.0	NPT 2	0 - 230	–	121.0	–	9.03	–	432 093 C

Operating Data (Actuator - Pneumatic Operation)



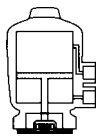
Control Function of Actuator

A: single acting



with spring force closed

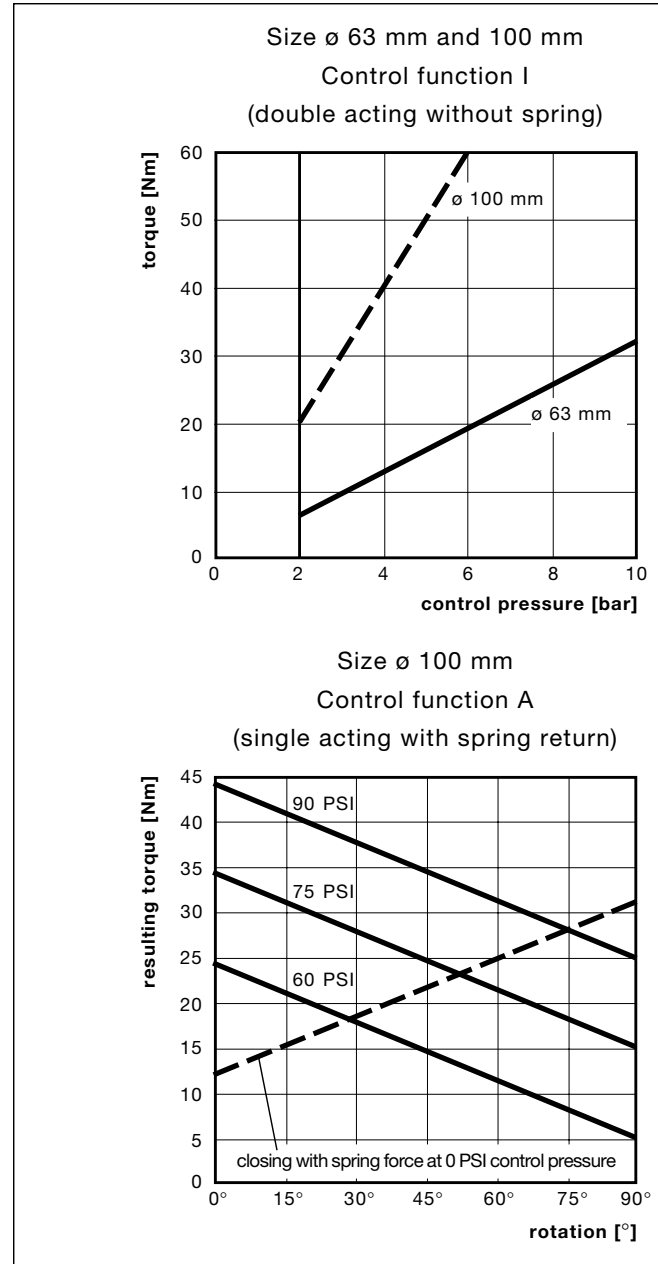
I: double acting



no spring

Size	ø 63 mm with control function I, ø 100 mm with control function A and I
Control medium	Neutral gases and air
Control pressure (of actuator alone)	
size ø 63 mm	30 to 140 PSI
size ø 100 mm	30 to 87 PSI
Rotation	90° ± 3°
Ambient temp.	14°F to 140°F
Response time	1 to 3.5 s
Flange interface for assembly 5211	Flange F04, F05 and F07 per DIN 3337 and ISO

Torque of Actuator Alone

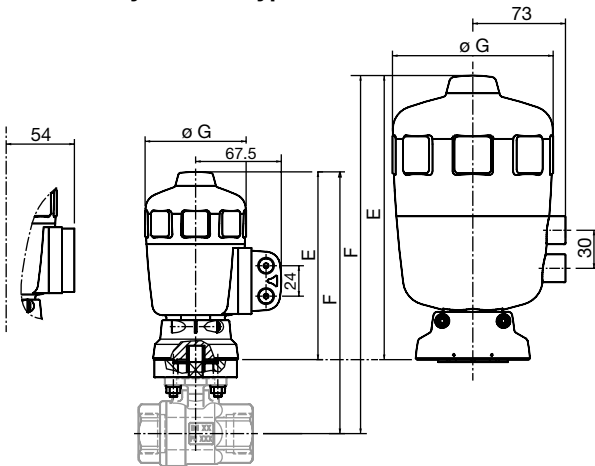


Materials (Actuator - Pneumatic Operation)

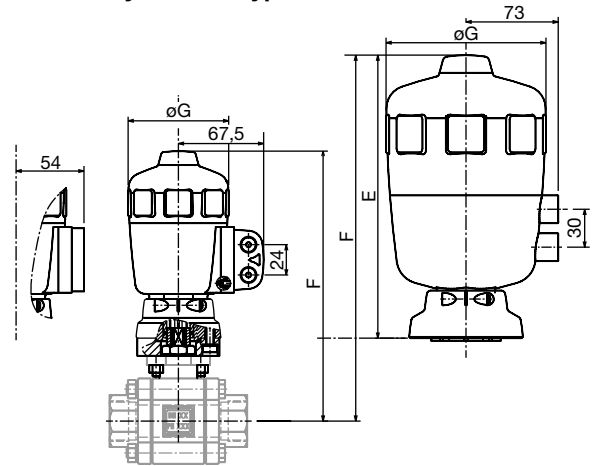
Flange	PA6 GF30 (Polyamid, glass-fiber reinforced)
Internal parts	POM and PBT
Rotary shaft	Stainless Steel 1.4308
Seals	NBR
Service ports	Brass (size ø 63 mm) SS (size ø 100 mm)

Dimensions [mm] (Actuator - Pneumatic Operation)

2-Piece Body Version Type 2652



3-Piece Body Version Type 2655



Orifice DN	Port Connection [inch]	Actuator [mm]	Dimensions [mm]		
			E	F	G
10.0	NPT 1/4	E (63)	148.0	196.0	80
12.0	NPT 3/8	E (63)	148.0	196.0	80
15.0	NPT 1/2	E (63)	148.0	197.5	80
20.0	NPT 3/4	E (63)	148.0	201.0	80
25.0	NPT 1	E (63)	148.0	207.0	80
32.0	NPT 1-1/4	G (100)	224.0	288.0	127
40.0	NPT 1-1/2	G (100)	224.0	294.0	127
50.0	NPT 2	G (100)	224.0	296.5	127

Orifice DN	Port Connection		Actuator [mm]	Dimensions [mm]		
	Full Bore [inch]	Reduced Bore [inch]		E	F	G
10.0	NPT 1/4	-	E (63)	148.0	190.0	80.0
12.0	NPT 3/8	NPT 1/2	E (63)	148.0	190.0	80.0
15.0	NPT 1/2	NPT 3/4	E (63)	148.0	200.0	80.0
20.0	NPT 3/4	NPT 1	E (63)	148.0	204.0	80.0
25.0	NPT 1	NPT 1-1/4	E (63)	148.0	214.0	80.0
32.0	NPT 1-1/4	NPT 1-1/2	G (100)	224.0	293.0	127.0
40.0	NPT 1-1/2	NPT 2	G (100)	224.0	304.0	127.0

6519 Namur Pilot Valves for Powered Actuator



Type 6519 Namur with cable plug Type 2508, form A
DN 6; PN 29-116 PSI



Type 6519 Namur Ex with terminal box
DN 6; PN 29-116 PSI



Type 6519 Namur Ex with molded-in cable
DN 6; PN 29-116 PSI



Specifications / Ordering Chart (Actuator - Pneumatic Operation)

Control Function	Orifice DN [mm]	Port Connection [inch]	Actuator Size [ø mm]	Pressure Range [PSI]	Control Pressure Min / Max [PSI]	Cv-Rating		Weight Full Bore [lb.]	Reduced Bore	Item No.	
						Full Bore [m³/h]	Reduced Bore			Full Bore	Reduced Bore

2-Piece Ball Valve Type 2652

A	10.0	NPT 1/4	100.0	0 - 230	58 / 89	8.2	-	8.59	-	431 122 C	-
A	12.0	NPT 3/8	100.0	0 - 230	58 / 89	10.6	-	8.81	-	431 123 D	-
A	15.0	NPT 1/2	100.0	0 - 230	58 / 89	12.9	-	9.03	-	431 124 E	-
A	20.0	NPT 3/4	100.0	0 - 230	58 / 89	30.6	-	10.58	-	431 125 F	-
A	25.0	NPT 1	100.0	0 - 230	58 / 89	45.9	-	11.68	-	431 126 G	-
I	10.0	NPT 1/4	63.0	0 - 230	58 / 140	8.2	-	3.52	-	431 111 H	-
I	12.0	NPT 3/8	63.0	0 - 230	58 / 140	10.6	-	3.74	-	431 112 A	-
I	15.0	NPT 1/2	63.0	0 - 230	58 / 140	12.9	-	3.96	-	431 113 B	-
I	20.0	NPT 3/4	63.0	0 - 230	58 / 140	30.6	-	5.29	-	431 114 C	-
I	25.0	NPT 1	63.0	0 - 230	58 / 140	45.9	-	6.61	-	431 115 D	-
I	32.0	NPT 1-1/4	100.0	0 - 230	58 / 87	81.0	-	11.68	-	431 116 E	-
I	40.0	NPT 1-1/2	100.0	0 - 230	58 / 87	121.0	-	14.55	-	431 117 F	-
I	50.0	NPT 2	100.0	0 - 230	58 / 87	235.0	-	17.63	-	431 118 Q	-

3-Piece Ball Valve Type 2655

A	10.0	NPT 1/4	100.0	0 - 230	58 / 87	8.2	-	8.81	-	431 224 J	-
A	12.0	NPT 3/8	100.0	0 - 230	58 / 87	8.2	-	8.81	-	431 225 K	-
A	12.0	NPT 1/2	100.0	0 - 230	58 / 87	-	8.2	-	8.81	-	431 235 M
A	15.0	NPT 1/2	100.0	0 - 230	58 / 87	11.8	-	9.25	-	431 226 L	-
A	15.0	NPT 3/4	100.0	0 - 230	58 / 87	-	11.8	-	9.25	-	431 236 N
A	20.0	NPT 3/4	100.0	0 - 230	58 / 87	32.9	-	10.58	-	431 227 M	-
A	20.0	NPT 1	100.0	0 - 230	58 / 87	-	32.9	-	10.58	-	431 237 P
A	25.0	NPT 1	100.0	0 - 230	58 / 87	47.0	-	11.79	-	431 228 W	-
A	25.0	NPT 1-1/4	100.0	0 - 230	58 / 87	-	47.0	-	11.79	-	431 238 Y
I	10.0	NPT 1/4	63.0	0 - 230	58 / 140	8.2	-	3.52	-	431 217 K	-
I	12.0	NPT 3/8	63.0	0 - 230	58 / 140	8.2	-	3.52	-	431 218 U	-
I	12.0	NPT 1/2	63.0	0 - 230	58 / 140	-	8.2	-	3.52	-	431 229 X
I	15.0	NPT 1/2	63.0	0 - 230	58 / 140	11.8	-	3.52	-	431 219 V	-
I	15.0	NPT 3/4	63.0	0 - 230	58 / 140	-	11.8	-	3.52	-	431 230 U
I	20.0	NPT 3/4	63.0	0 - 230	58 / 140	32.9	-	4.85	-	431 220 S	-
I	20.0	NPT 1	63.0	0 - 230	58 / 140	-	32.9	-	4.85	-	431 231 R
I	25.0	NPT 1	63.0	0 - 230	58 / 140	47.0	-	6.17	-	431 221 P	-
I	25.0	NPT 1-1/4	63.0	0 - 230	58 / 140	-	47.0	-	6.17	-	431 232 J
I	32.0	NPT 1-1/4	100.0	0 - 230	58 / 140	83.5	-	11.24	-	431 222 Q	-
I	32.0	NPT 1-1/2	100.0	0 - 230	58 / 140	-	83.5	-	11.24	-	431 233 K
I	40.0	NPT 1-1/2	100.0	0 - 230	58 / 140	121.0	-	14.77	-	431 223 R	-
I	40.0	NPT 2	100.0	0 - 230	58 / 140	-	121.0	-	14.77	-	431 234 L

Specifications / Ordering Chart (Actuator - Pneumatic Operation)

5/2 / 3/2 way, DN 6, NPT 1/4", PN 2 - 116 PSI, PA body:

Type 6519 Namur with standard cable plug Type 2508

Material Port Connection	Ex Approval	Item No. Voltage			
		24/DC	24/60	120/60	240/60
MS (nickel-plated)	-				
SS	-				

Type 6519 Namur Ex with molded-in cable

Material Port Connection	Ex Approval	Item No. Voltage			
		024/UC	120/UC	240/UC	-
MS (nickel-plated)					-
SS					-
MS (nickel-plated)					-
SS					-

For other versions, please see datasheets 6519 Namur and 6519 Namur Ex

Adapter plate for NAMUR pilot valve:

Description	Material	Item No.
for actuator ø 63 mm	PA	427 405 M
for actuator ø 100 mm	Brass	637 114 J
for actuator ø 100 mm	SS	634 275 G

Optional System Modules

Electrical Position Feedback Type 1062



Positions are electrically signaled (open, closed and open & closed) with following features:

- LEDs provide optical position indication
- Mechanic switches with gold/silver contacts
- Inductive switches in 2- and 3-wire (PNP / NPN) technology
- Inductive switches per DIN 19234 (Namur EEx-i)


 [Datasheet Type 1062](#)

Pilot Solenoid Valve Type 6519 Namur



Pneumatic pilot valve for the actuation:

- 3/2 and 5/2 way direct mounted
- Namur flange
- PN 30 to 115 PSI
- EEx-m-II C T5 version


 [Datasheet Type 6519 Namur and Type 6519 Namur Ex](#)

Control Head Type 8631



Control head Type 8631 for pneumatic piloting and electronic control of the pneumatic actuated ball valve:

- Single / double acting
- PG / EaseOn / PG-ASI / Multipole-ASI connections
- G / NPT / Rc threaded supply ports

 [Datasheet 2651-2656 with TOP Control](#)




Sensors



For flow, level, analysis, pressure and temperature

- Sensor - only with frequency / PT100 signal
- Transmitter
- Switch
- Batch



 [Datasheets Type 80XX, 81XX, 82XX, 83XX, 84XX, SLXX, STXX](#)



Technical Data (Actuator - Electric Operation)

Power Failure Valve Open with Two Limit Switches

Operating Data (Actuator - Electric Operation)

Actuator Type	Operating Voltage with Tolerance $\pm 5\%$ [V]	Power Required [W]	Torque [Nm]	Duty Cycles [%]	Full Rotation Time [s/90°]	With / Without Input Signal [mA]
3011	24 DC	7	12	100	10	4 – 20
	240/60 AC	12	10	50	8	4 – 20
3001	24 DC	20	25	100	7	4 – 20
	120/60 AC	55	25	50	7	–
	240/60 AC	55	25	50	6	4 – 20
3002	24 DC	20	100	100	14	4 – 20
	120/60 AC	55	100	50	14	–
	240/60 AC	55	100	50	11	4 – 20

Rotation	90° \pm 3°
Ambient temperature	14°F to 122°F
Limit switch	Changeover switch, single-pole
Electrical connection	Cable plug for cable \varnothing 6 - 7 mm per DIN 43650 A
Rating	NEMA 4
Signals	
Control signal	4 – 20 mA
Impedance signal input	R input: < 50 Ω
Accuracy	Linearity: < $\pm 1.5\%$ Hysteresis: < $\pm 1.5\%$
Flange interface	F05 per ISO 5211
Installation	As required, preferably with solenoid system upright

Materials (Actuator - Electric Operation)

Housing: Polycarbonate

Options (Actuator - Electric Operation)

For motors 3001 / 3002 with 120/60 and 240/60:

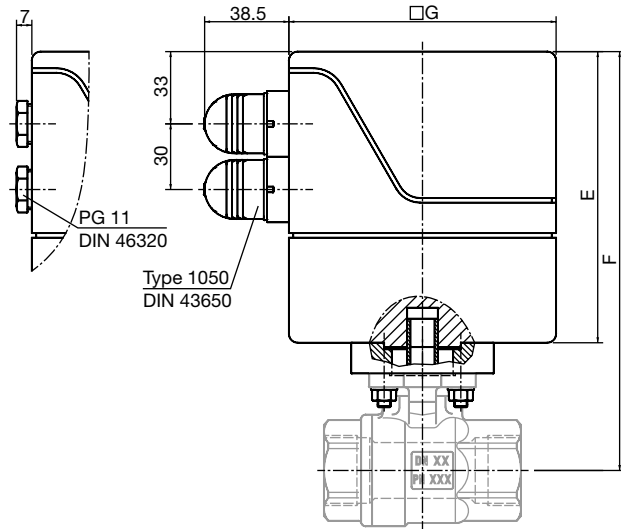
- Drive torque limiter
- Safety positions - closing at power breakdown
- opening at power breakdown

For all motors:

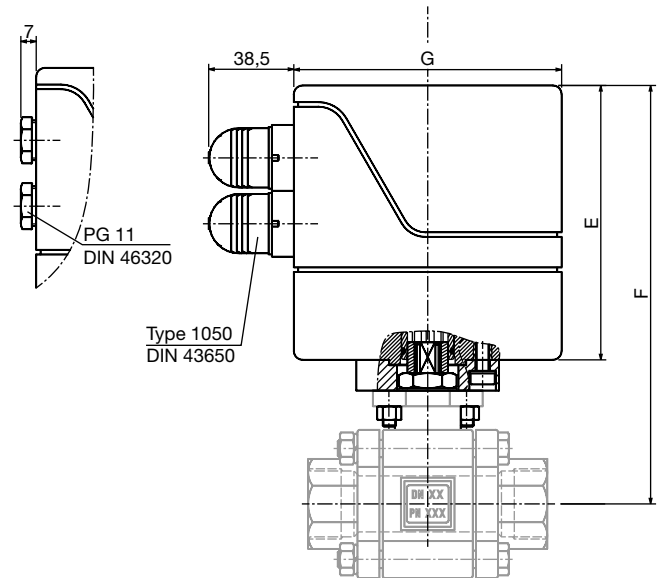
- Electrical feed back signal
- Electronic control of drive torque
- Standard signal 0 – 10 V

Dimensions [mm] (Actuator - Pneumatic Operation)

2-Piece Body Version Type 2653



3-Piece Body Version Type 2656



Orifice DN [mm]	Port Connection [inch]	Actuator E	Dimensions [mm]		
			F	G	
10.0	NPT 1/4	3011	125.0	173.0	122.0
12.0	NPT 3/8	3011	125.0	173.0	122.0
15.0	NPT 1/2	3011	125.0	174.5	122.0
20.0	NPT 3/4	3011	125.0	178.0	122.0
25.0	NPT 1	3001	135.0	194.0	122.0
32.0	NPT 1-1/4	3001	135.0	199.0	122.0
40.0	NPT 1-1/2	3002	170.0	240.0	122.0
50.0	NPT 2	3002	170.0	242.5	122.0

Orifice DN [mm]	Port Connection		Actuator	Dimensions [mm]				
	Full Bore [inch]	Reduced Bore [inch]		E	E*	F	F*	G
10.0	NPT 1/4	-	3011	125	125	167	167	122
12.0	NPT 3/8	NPT 1/2	3011	125	125	167	167	122
15.0	NPT 1/2	NPT 3/4	3011	125	125	178	178	122
20.0	NPT 3/4	NPT 1	3011	125	125	181	181	122
25.0	NPT 1	NPT 1-1/4	3001	135	185	201	251	122
32.0	NPT 1-1/4	NPT 1-1/2	3001	135	185	204	254	122
40.0	NPT 1-1/2	NPT 2	3002	170	220	215	265	122

E* and F* 4-20mA version

Optional System Modules

Sensors



For flow, level, analysis, pressure and temperature

- Sensor - only with frequency / PT100 signal
- Transmitter
- Switch
- Batch

Datasheets Type 80XX, 81XX, 82XX, 83XX, 84XX

Specifications / Ordering Chart (Actuator - Electric Operation)

Orifice DN [mm]	Port Conn. [inch]	Voltage		Actuator Type	Pressure Range [PSI]	Cv-rating		Weight		Item No.	
		without Norm Signal	with Norm Signal 4 – 20 mA			Full Bore [m³/h]	Reduced Bore	Full Bore [lb.]	Reduced Bore	Full Bore	Reduced Bore

2-Piece Ball Valve Type 2653

10.0	NPT 1/4	24 VDC		3011	0 - 230	8.2	–	5.73	–	431 159 Z	–
10.0	NPT 1/4	240 V 60 Hz		3011	0 - 230	8.2	–	5.73	–	431 160 W	–
10.0	NPT 1/4		24 VDC	3011	0 - 230	8.2	–	5.73	–	431 161 K	–
10.0	NPT 1/4		240 V 60 Hz	3011	0 - 230	8.2	–	5.73	–	431 162 L	–
12.0	NPT 3/8	24 VDC		3011	0 - 230	10.6	–	5.95	–	431 163 M	–
12.0	NPT 3/8	240 V 60 Hz		3011	0 - 230	10.6	–	5.95	–	431 164 N	–
12.0	NPT 3/8		24 VDC	3011	0 - 230	10.6	–	5.95	–	431 165 P	–
12.0	NPT 3/8		240 V 60 Hz	3011	0 - 230	10.6	–	5.95	–	431 166 Q	–
15.0	NPT 1/2	24 VDC		3011	0 - 230	12.9	–	6.17	–	431 167 R	–
15.0	NPT 1/2	240 V 60 Hz		3011	0 - 230	12.9	–	6.17	–	431 168 S	–
15.0	NPT 1/2		24 VDC	3011	0 - 230	12.9	–	6.17	–	431 169 T	–
15.0	NPT 1/2		240 V 60 Hz	3011	0 - 230	12.9	–	6.17	–	431 170 Y	–
20.0	NPT 3/4	24 VDC		3011	0 - 230	30.6	–	7.71	–	431 171 M	–
20.0	NPT 3/4	240 V 60 Hz		3011	0 - 230	30.6	–	7.71	–	431 172 N	–
20.0	NPT 3/4		24 VDC	3011	0 - 230	30.6	–	7.71	–	431 173 P	–
20.0	NPT 3/4		240 V 60 Hz	3011	0 - 230	30.6	–	7.71	–	431 174 Q	–
25.0	NPT 1	24 VDC		3001	0 - 230	45.9	–	13.00	–	431 175 R	–
25.0	NPT 1	120 V 60 Hz		3001	0 - 230	45.9	–	13.00	–	431 176 J	–
25.0	NPT 1	240 V 60 Hz		3001	0 - 230	45.9	–	13.00	–	431 177 K	–
25.0	NPT 1		24 VDC	3001	0 - 230	45.9	–	13.00	–	431 178 U	–
25.0	NPT 1		240 V 60 Hz	3001	0 - 230	45.9	–	13.00	–	431 179 V	–
32.0	NPT 1-1/4	24 VDC		3001	0 - 230	81.0	–	14.77	–	431 180 K	–
32.0	NPT 1-1/4	120 V 60 Hz		3001	0 - 230	81.0	–	14.77	–	431 181 G	–
32.0	NPT 1-1/4	240 V 60 Hz		3001	0 - 230	81.0	–	14.77	–	431 182 H	–
32.0	NPT 1-1/4		24 VDC	3001	0 - 230	81.0	–	14.77	–	431 183 A	–
32.0	NPT 1-1/4		240 V 60 Hz	3001	0 - 230	81.0	–	14.77	–	431 184 B	–
40.0	NPT 1-1/2	24 VDC		3002	0 - 230	121.0	–	18.51	–	431 185 C	–
40.0	NPT 1-1/2	120 V 60 Hz		3002	0 - 230	121.0	–	18.51	–	431 186 D	–
40.0	NPT 1-1/2	240 V 60 Hz		3002	0 - 230	121.0	–	18.51	–	431 187 E	–
40.0	NPT 1-1/2		24 VDC	3002	0 - 230	121.0	–	18.51	–	431 188 P	–
40.0	NPT 1-1/2		240 V 60 Hz	3002	0 - 230	121.0	–	18.51	–	431 189 Q	–
50.0	NPT 2	24 VDC		3002	0 - 230	235.0	–	21.60	–	431 190 M	–
50.0	NPT 2	120 V 60 Hz		3002	0 - 230	235.0	–	21.60	–	431 191 A	–
50.0	NPT 2	240 V 60 Hz		3002	0 - 230	235.0	–	21.60	–	431 192 B	–
50.0	NPT 2		24 VDC	3002	0 - 230	235.0	–	21.60	–	431 193 C	–
50.0	NPT 2		240 V 60 Hz	3002	0 - 230	235.0	–	21.60	–	431 194 D	–

Specifications / Ordering Chart (Actuator - Electric Operation)

Orifice DN [mm]	Port Conn. [inch]	Voltage		Actuator Type	Pressure Range [PSI]	Cv-rating		Weight		Item No.	
		without Norm Signal	with Norm Signal 4 – 20 mA			Full Bore [m³/h]	Reduced Bore	Full Bore [lb.]	Reduced Bore	Full Bore	Reduced Bore

3-Piece Ball Valve Type 2656

10.0	NPT 1/4	24 VDC	–	3011	0 - 230	8.2	–	5.95	–	431 297 L	–
10.0	NPT 1/4	240 V 60 Hz	–	3011	0 - 230	8.2	–	5.95	–	431 298 V	–
10.0	NPT 1/4	–	24 VDC	3011	0 - 230	8.2	–	5.95	–	431 299 W	–
10.0	NPT 1/4	–	240 V 60 Hz	3011	0 - 230	8.2	–	5.95	–	431 300 B	–
12.0	NPT 3/8	24 VDC	–	3011	0 - 230	8.2	–	5.95	–	431 301 Y	–
12.0	NPT 1/2	24 VDC	–	3011	0 - 230	–	8.2	–	5.95	–	431 328 S
12.0	NPT 3/8	240 V 60 Hz	–	3011	0 - 230	8.2	–	5.95	–	431 302 Z	–
12.0	NPT 1/2	240 V 60 Hz	–	3011	0 - 230	–	8.2	–	5.95	–	431 329 T
12.0	NPT 3/8	–	24 VDC	3011	0 - 230	8.2	–	5.95	–	431 303 S	–
12.0	NPT 1/2	–	24 VDC	3011	0 - 230	–	8.2	–	5.95	–	431 330 Y
12.0	NPT 3/8	–	240 V 60 Hz	3011	0 - 230	8.2	–	5.95	–	431 304 T	–
12.0	NPT 1/2	–	240 V 60 Hz	3011	0 - 230	–	8.2	–	5.95	–	431 331 M
15.0	NPT 1/2	24 VDC	–	3011	0 - 230	11.8	–	6.39	–	431 305 U	–
15.0	NPT 3/4	24 VDC	–	3011	0 - 230	–	11.8	–	6.39	–	431 332 N
15.0	NPT 1/2	240 V 60 Hz	–	3011	0 - 230	11.8	–	6.39	–	431 306 V	–
15.0	NPT 3/4	240 V 60 Hz	–	3011	0 - 230	–	11.8	–	6.39	–	431 333 P
15.0	NPT 1/2	–	24 VDC	3011	0 - 230	11.8	–	6.39	–	431 307 W	–
15.0	NPT 3/4	–	24 VDC	3011	0 - 230	–	11.8	–	6.39	–	431 334 Q
15.0	NPT 1/2	–	240 V 60 Hz	3011	0 - 230	11.8	–	6.39	–	431 308 F	–
15.0	NPT 3/4	–	240 V 60 Hz	3011	0 - 230	–	11.8	–	6.39	–	431 335 R
20.0	NPT 3/4	24 VDC	–	3011	0 - 230	32.9	–	7.71	–	431 309 G	–
20.0	NPT 1	24 VDC	–	3011	0 - 230	–	32.9	–	7.71	–	431 336 J
20.0	NPT 3/4	240 V 60 Hz	–	3011	0 - 230	32.9	–	7.71	–	431 310 U	–
20.0	NPT 1	240 V 60 Hz	–	3011	0 - 230	–	32.9	–	7.71	–	431 337 K
20.0	NPT 3/4	–	24 VDC	3011	0 - 230	32.9	–	7.71	–	431 311 R	–
20.0	NPT 1	–	24 VDC	3011	0 - 230	–	32.9	–	7.71	–	431 338 U
20.0	NPT 3/4	–	240 V 60 Hz	3011	0 - 230	32.9	–	7.71	–	431 312 J	–
20.0	NPT 1	–	240 V 60 Hz	3011	0 - 230	–	32.9	–	7.71	–	431 339 V
25.0	NPT 1	24 VDC	–	3001	0 - 230	47.0	–	13.22	–	431 313 K	–
25.0	NPT 1-1/4	24 VDC	–	3001	0 - 230	–	47.0	–	13.22	–	431 340 A
25.0	NPT 1	120 V 60 Hz	–	3001	0 - 230	47.0	–	13.22	–	431 314 L	–
25.0	NPT 1-1/4	120 V 60 Hz	–	3001	0 - 230	–	47.0	–	13.22	–	431 341 X
25.0	NPT 1	240 V 60 Hz	–	3001	0 - 230	47.0	–	13.22	–	431 315 M	–
25.0	NPT 1-1/4	240 V 60 Hz	–	3001	0 - 230	–	47.0	–	13.22	–	431 342 Y
25.0	NPT 1	–	24 VDC	3001	0 - 230	47.0	–	13.22	–	431 316 N	–
25.0	NPT 1-1/4	–	24 VDC	3001	0 - 230	–	47.0	–	13.22	–	431 343 Z
25.0	NPT 1	–	240 V 60 Hz	3001	0 - 230	47.0	–	13.22	–	431 317 P	–
25.0	NPT 1-1/4	–	240 V 60 Hz	3001	0 - 230	–	47.0	–	13.22	–	431 344 S
32.0	NPT 1-1/4	24 VDC	–	3001	0 - 230	83.5	–	14.77	–	431 318 Y	–
32.0	NPT 1-1/2	24 VDC	–	3001	0 - 230	–	83.5	–	14.77	–	431 345 T
32.0	NPT 1-1/4	120 V 60 Hz	–	3001	0 - 230	83.5	–	14.77	–	431 319 Z	–
32.0	NPT 1-1/2	120 V 60 Hz	–	3001	0 - 230	–	83.5	–	14.77	–	431 346 U
32.0	NPT 1-1/4	240 V 60 Hz	–	3001	0 - 230	83.5	–	14.77	–	431 320 W	–
32.0	NPT 1-1/2	240 V 60 Hz	–	3001	0 - 230	–	83.5	–	14.77	–	431 347 V
32.0	NPT 1-1/4	–	24 VDC	3001	0 - 230	83.5	–	14.77	–	431 321 K	–
32.0	NPT 1-1/2	–	24 VDC	3001	0 - 230	–	83.5	–	14.77	–	431 348 E
32.0	NPT 1-1/4	–	240 V 60 Hz	3001	0 - 230	83.5	–	14.77	–	431 322 L	–
32.0	NPT 1-1/2	–	240 V 60 Hz	3001	0 - 230	–	83.5	–	14.77	–	431 349 F
40.0	NPT 1-1/2	24 VDC	–	3002	0 - 230	121.0	–	18.73	–	431 323 M	–
40.0	NPT 2	24 VDC	–	3002	0 - 230	–	121.0	–	18.73	–	431 350 C
40.0	NPT 1-1/2	120 V 60 Hz	–	3002	0 - 230	121.0	–	18.73	–	431 324 N	–
40.0	NPT 2	120 V 60 Hz	–	3002	0 - 230	–	121.0	–	18.73	–	431 351 Z
40.0	NPT 1-1/2	240 V 60 Hz	–	3002	0 - 230	121.0	–	18.73	–	431 325 P	–
40.0	NPT 2	240 V 60 Hz	–	3002	0 - 230	–	121.0	–	18.73	–	431 352 S
40.0	NPT 1-1/2	–	24 VDC	3002	0 - 230	121.0	–	18.73	–	431 326 Q	–
40.0	NPT 2	–	24 VDC	3002	0 - 230	–	121.0	–	18.73	–	431 353 T
40.0	NPT 1-1/2	–	240 V 60 Hz	3002	0 - 230	121.0	–	18.73	–	431 327 R	–
40.0	NPT 2	–	240 V 60 Hz	3002	0 - 230	–	121.0	–	18.73	–	431 354 U

Customized System Solutions

Customized System Solutions

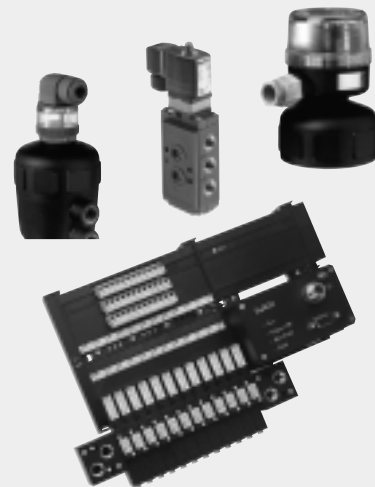
Valve Program



Sensor Program



Accessories & Pneumatics



INGENIEROS ASOCIADOS DE CONTROL S.L.

Tel: 913831390
comercial@iac-sl.es

In case of special requirements
please consult for advice.

We reserve the right to make technical
changes without notice.

US_2651-2656_1000