

Bourdon Tube Pressure Gauges

Welding Gauges to DIN EN 562 • Model 111.11

Pressure Gauges

Service intended

Pressure gauges for uses in welding, cutting and related processes.

Design

EN 562

Nominal size

50 and 63 mm

Accuracy class per EN 562/5.2

2.5

Scale ranges

0 ... 1 to 0 ... 400 bar or other equivalent units of pressure or vacuum for use with oxygen or acetylene.

Working pressure

Steady: $\frac{3}{4}$ of full scale value

Fluctuating: $\frac{2}{3}$ of full scale value

Short time: full scale value

Operating temperature

Ambient: -40 ... +60 °C

Medium: +60 °C maximum

Temperature effect

When temperature of the pressure element deviates from reference temperature (+20 °C):

max. $\pm 0.4\%/10$ K of the span.

Standard features**Pressure connection**

Material: Cu-alloy

Threaded entry per EN 837-1 /7.3

G $\frac{1}{4}$ B, 14 mm flats, with restrictor

Pressure element

Material: Cu-alloy

acetylene gauges max. 70% copper

≤ 60 bar: C-type,

> 60 bar: helical type

Movement

Material: Cu-alloy

Dial

White plastic with pointer stop pin

With black lettering

Pointer

Black plastic

Case

Brass lacquered steel case with pressure vent in case back

**Window**

Domed polycarbonate snap-fit window

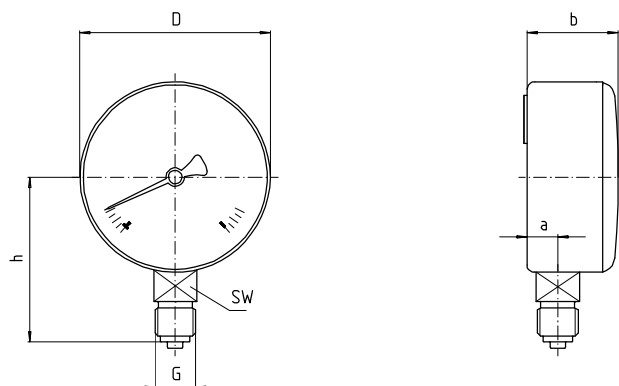
Optional extras

- Other pressure connection
- Slip-on bezel
- Centre back pressure entry

Dimensions

Standard versions

Radial bottom pressure connection



1034 464.01

Nominal size	Dimensions [mm]						Weight [kg]
	a	b	D	G	h ± 1	SW	
50	9,5	27,5	49	G ¼ B	45	14	0.11
63	10	30	62	G ¼ B	53.5	14	0.15

Pressure connection per EN 837-1 /7.3

Ordering information

State:

Pressure gauge model / Nominal size / Scale range / Size and location of connection / Optional extras required



INGENIEROS ASOCIADOS DE CONTROL S.L.

Tel.: 913831390
comercial@ac-sl.es