

# Bourdon Tube Pressure Gauges

Test Gauge Series Class 0.25 • Model 341.11  
Class 0.1 • Model 342.11

## Pressure Gauges

### Service intended

Pressure gauge calibration and laboratory measurement.  
Suitable for all gaseous and liquid media that will not obstruct the pressure system.

### Design

EN 837-1

Model 342.11 includes attache case and point-to-point calibration certificate.

### Nominal size

250 mm

### Accuracy class per EN 837-1 /6

Model 341.11: 0.25

±0.25 per BS and ANSI

Model 342.11: 0.1

### Scale ranges per EN 837-1 /5

0 ... 0.6 to 0 ... 1600 bar

or other equivalent units of pressure or vacuum.

### Calibrating medium

≤ 25 bar: gas

> 25 bar: oil

### Working pressure

Steady: full scale value

Fluctuating: 0.9 x full scale value

### Operating temperature

Ambient: -20 ... +60 °C

Medium: +100 °C maximum

### Temperature effect

When temperature of the pressure element deviates from reference temperature (+20 °C):

max. ±0.1 %/10 K of true scale value

### Ingress protection

IP 54 per EN 60 529 / IEC 529

### Standard features

#### Pressure connection

Material: stainless steel 1.4571

Threaded entry (radial) per EN 837-1 /7.3

G ½ B (male), 22 mm flats

#### Pressure element

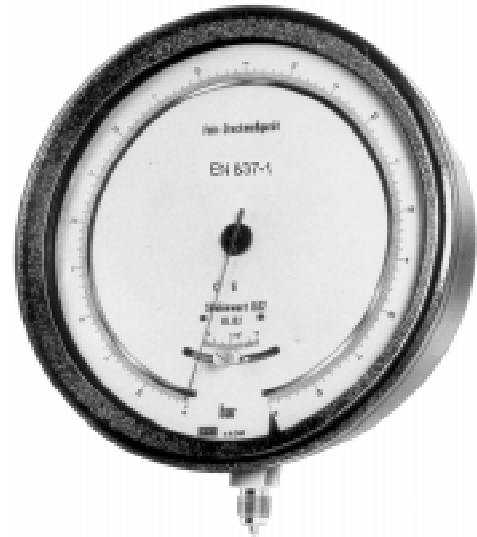
Material: Ni-Fe alloy (Ni-Span C), exception 0 ... 0.6 bar: Cu-alloy

< 100 bar: C-type

≥ 100 bar: helical type

#### Movement

Cu-alloy, wear parts argentan



Model 342.11

### Dial

330° mirror band scale aluminium white with black lettering.  
Zero adjustment by rotatable dial ± 15°

### Pointer

Black aluminium, knife edge pointer

### Case

Model 341.11: black finish steel case

Model 342.11: aluminium casting with integral flange  
black-silver hammer enamel finish

### Window

Green tinted non-reflecting plastic window

### Bezel ring

Model 341.11: slip-on bezel black finish steel

Model 342.11: screw-retained aluminium flange ring,  
black-silver hammer enamel finish

### Optional extras

- Other pressure connection

- Calibration on oil with ranges ≥ 4 bar

Model 341.11: - 3-hole surface mounting flange

- 3-hole panel mounting flange

- attache case

- point-to-point calibration certificate

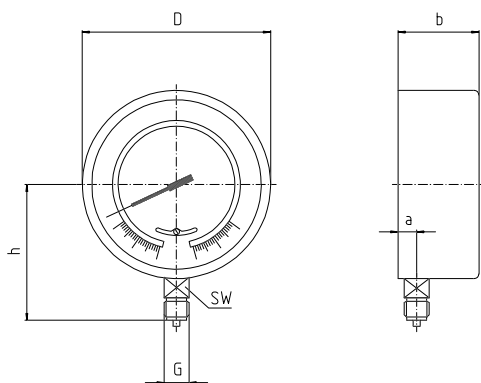
Model 342.11: - flush panel mounting with clamp

- service booklet including voucher,

for 3 calibration check-ups

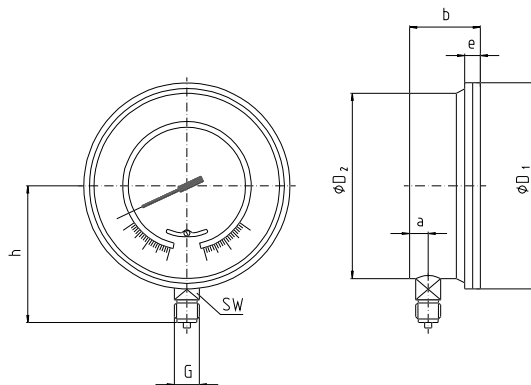
**Dimensions**  
Standard version

**Model 341.11 with steel case**  
Radial bottom pressure entry



1033 670

**Model 342.11 case of aluminium casting**  
Radial bottom pressure entry



1034 650

Model	Dimensions [mm]									Weight [kg]
	a	b	D	D <sub>1</sub>	D <sub>2</sub>	e	G	h ± 1	SW	
341.11	17	71	250	-	-	-	G ½ B	165	22	3.00
342.11	22	78	-	277	250	16.5	G ½ B	165	22	6.00

Standard pressure entry with parallel thread and seating to EN 837-1 /7.3.

**Ordering information**

State:  
Pressure gauge model / Nominal size / Scale range / Size and location of connection / Optional extras required



INGENIEROS ASOCIADOS DE CONTROL S.L.  
Tel: 91 3831390  
comercial@iac-sl.es