



Picture showing fitting Type SO01 Stainless Steel with pressure sensor/switch Type 8311

Our T-fitting SO01 can be used to connect any threaded sensor device for a measurement in the pipe. For example; indicators, sensors, switches, transmitters and controllers for easy flow, pressure and temperature control.

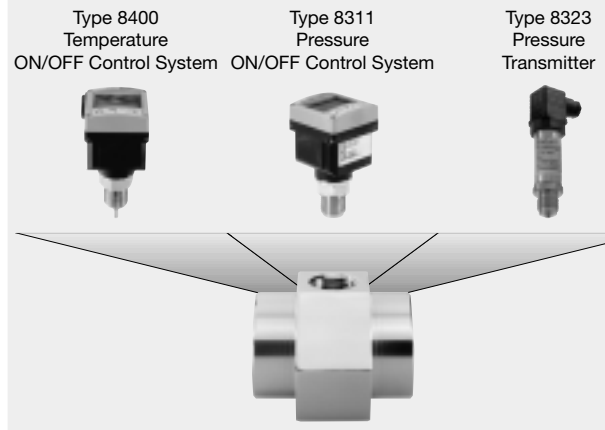
Process Specifications

Pipe diameter	1/2" up to 2"
Sensor connection	
Internal threaded ports	G 1/2 up to G 2 Rc 1/2 up to Rc 2 NPT 1/2 up to NPT 2
Temperatures	
Ambient	-40°F up to 257°F
Storage	-40°F up to 257°F
Fluid	limited and depending on sensor
Materials	
Seal	FPM (Viton)
Fitting	316L Stainless Steel
Pressure class	230 PSI (PN16)

STAINLESS STEEL, T-Fitting

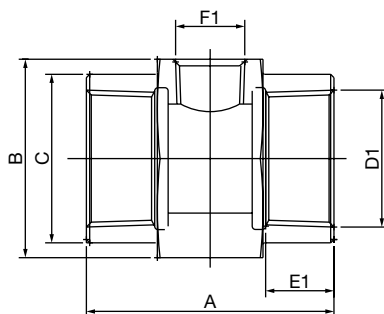
- ✓ Fitting adapted to whole Sensor Device Range
- ✓ Straight forward T-mounting

Applications: Insertion measurement in a pipe with threaded sensor devices



Dimensions [mm] for Fittings - Stainless Steel

Fitting with internal threaded port connection G, Rc and NPT 316L Stainless Steel



Orifice DN	Internal Threaded Port			Measurements (General)		
	E1 [mm]	D1	F1 [mm]	A [mm]	B [mm]	C ø [mm]
15	14.0	G 1/2	G 1/2, NPT 1/2, Rc 1/2	65.0	□ 40	32.0
15	14.0	NPT 1/2		65.0	□ 40	32.0
15	14.0	Rc 1/2		65.0	□ 40	32.0
20	14.0	G 3/4		65.0	□ 45	38.0
20	14.0	NPT 3/4		65.0	□ 45	38.0
20	14.0	Rc 3/4		65.0	□ 45	38.0
25	16.5	G 1		70.0	A/F 55	44.0
25	16.5	NPT 1		70.0	A/F 55	44.0
25	16.5	Rc 1		70.0	A/F 55	44.0
32	18.5	G 1 1/4		70.0	A/F 55	52.5
32	18.5	NPT 1 1/4		70.0	A/F 55	52.5
32	18.5	Rc 1 1/4		70.0	A/F 55	52.5
40	18.5	G 1 1/2		75.0	A/F 60	58.5
40	18.5	NPT 1 1/2		75.0	A/F 60	58.5
40	18.5	Rc 1 1/2		75.0	A/F 60	58.5
50	23.0	G 2		80.0	A/F 70	69.0
50	23.0	NPT 2		80.0	A/F 70	69.0
50	23.0	Rc 2		80.0	A/F 70	69.0



INGENIEROS ASOCIADOS DE CONTROL S.L.
Telf.: 913331390
comercial@ac-si.es

Specifications - Ordering Chart (Other Versions on Request) for Type S001

Description	Orifice DN	Process Connection	Sensor Connection	Item No.
316L Stainless Steel Fitting World Wide				
• with internal threaded port connection				
Fitting with G 1/2 sensor connection	15	G 1/2	G 1/2	438 334 X
Fitting with G 1/2 sensor connection	20	G 3/4	G 1/2	438 335 Y
Fitting with G 1/2 sensor connection	25	G 1	G 1/2	438 336 Z
Fitting with G 1/2 sensor connection	32	G 1 1/4	G 1/2	438 337 S
Fitting with G 1/2 sensor connection	40	G 1 1/2	G 1/2	438 338 B
Fitting with G 1/2 sensor connection	50	G 2	G 1/2	438 339 C
316L Stainless Steel Fitting ASIAN				
• with internal threaded port connection ISO 7(JIS)				
Fitting with Rc 1/2 sensor connection	15	Rc 1/2	Rc 1/2	438 358 P
Fitting with Rc 1/2 sensor connection	20	Rc 3/4	Rc 1/2	438 359 Q
Fitting with Rc 1/2 sensor connection	25	Rc 1	Rc 1/2	438 360 M
Fitting with Rc 1/2 sensor connection	32	Rc 1 1/4	Rc 1/2	438 361 A
Fitting with Rc 1/2 sensor connection	40	Rc 1 1/2	Rc 1/2	438 362 B
Fitting with Rc 1/2 sensor connection	50	Rc 2	Rc 1/2	438 363 C
316L Stainless Steel Fitting NAFTA				
• with internal threaded port connection				
Fitting with NPT 1/2 sensor connection	15	NPT 1/2	NPT 1/2	438 346 B
Fitting with NPT 1/2 sensor connection	20	NPT 3/4	NPT 1/2	438 347 C
Fitting with NPT 1/2 sensor connection	25	NPT 1	NPT 1/2	438 348 M
Fitting with NPT 1/2 sensor connection	32	NPT 1 1/4	NPT 1/2	438 349 N
Fitting with NPT 1/2 sensor connection	40	NPT 1 1/2	NPT 1/2	438 350 K
Fitting with NPT 1/2 sensor connection	50	NPT 2	NPT 1/2	438 351 G

Burkert's Full Range of Fittings for Fluid Control Systems



Type of Fitting made of	SO01	SO05	SO10	SO20	SO30
	<ul style="list-style-type: none"> • Brass • Stainless Steel 	<ul style="list-style-type: none"> • Brass • Stainless Steel 	<ul style="list-style-type: none"> • Brass • Stainless Steel • Plastic 	<ul style="list-style-type: none"> • Brass • Stainless Steel • Plastic 	<ul style="list-style-type: none"> • Brass • Stainless Steel • Plastic
To be mounted with	<ul style="list-style-type: none"> • 8002 • 8302 • 8308 • 8310 • 8311 • 8320 • 8323 • 8324 • 8400 • or any other unit with G 1/2 sensor connection 	<ul style="list-style-type: none"> • 8002 • 8302 • 8308 • 8310 • 8311 • 8320 • 8323 • 8324 • 8400 • or any other unit with G 1/2 sensor connection 	<ul style="list-style-type: none"> • SE10 (complete unit: 8010) 	<ul style="list-style-type: none"> • 8022 • 8024 • 8025 • 8045 • 8205 • 8206 • 8222 • 8225 • 8226 	<ul style="list-style-type: none"> • SE30 (complete unit: 8030) • SE32 (complete unit: 8032) • SE34 (complete unit: 8034) • SE35 (complete unit: 8035)
Advantages	Low Total Cost of Ownership	High flexibility with INLINE fittings	Closed pipe system (sensor inside fitting)	High flexibility with Insertion fittings (for large diameters)	Closed pipe system (sensor inside fitting)

For further information, e.g. diameters, process connections and item-numbers, please see type specific datasheets.



In case of special application requirements, please consult for advice.

INGENIEROS ASOCIADOS DE CONTROL S.L.
Telf.: 91 383 1390
comercial@iac-sl.es

We reserve the right to make technical changes without notice.
US_SO01_SS_10/00