

Capsule Pressure Gauges

Standard Series • Model 611.10

Pressure Gauges

Service intended

Suitable for dry and gaseous media that will not attack copper alloy parts.

Design

EN 837-3

Nominal size

50 and 63 mm

Accuracy class per EN 837-3 /6

1.6

Scale ranges per EN 837-3 /5

50 mm: 0 ... 60 to 0 ... 600 mbar

63 mm: 0 ... 25 to 0 ... 600 mbar

or other equivalent units of pressure or vacuum.

Working pressure

Steady: full scale value

Fluctuating: 0.9 x full scale value

Operating temperature

Ambient: -20 ... +60 °C

Medium: +100 °C maximum

Temperature effect

When temperature of the pressure element deviates from reference temperature (+20 °C):

max. $\pm 0.6\%/10$ K of true scale value

Ingress protection

IP 32 per EN 60 529 / IEC 529

Standard features

Pressure connection

50 mm: back entry only

63 mm: radial or back entry

Threaded entry per EN 837-3 /7.3, G ¼ B (male), 14 mm flats

Material: Cu-alloy

Pressure element

Material: Cu-alloy

Sealing ring

NBR (Buna rubber)

Movement

Material: Cu-alloy

Zero adjustment

Through window



Dial

White aluminium with black lettering

Pointer

Black aluminium

Case

Black finish steel

Window

Domed snap-fit window of clear plastic

Optional extras (NS 63)

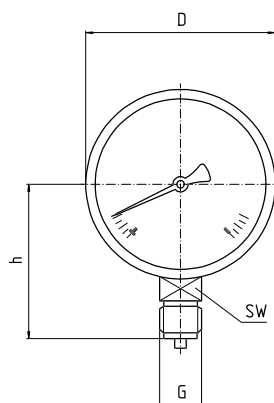
- Other pressure connection
- Wetted parts of stainless steel, sealing FPM (Viton) (**model 631.10**)
- Overpressure and vacuum safety
 - 10 x with scale ranges > 25 mbar,
 - 3 x with scale ranges 25 mbar
- Slip-on bezel ring *)
- 3-hole surface or panel mounting flange *)
- Triangular bezel with clamp *)

*) Nominal size 50 also

Dimensions

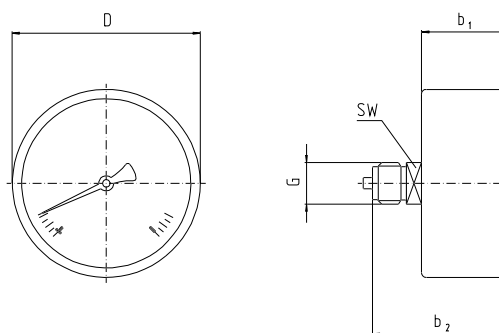
Standard version

Radial bottom pressure



1034 421

Centre back pressure entry



1034 430

Nominal size	Dimensions [mm]								Weight [kg]
	a	b	b ₁	b ₂	D	G	h ± 1	SW	
50	-	-	28	47	50	G ¼ B	-	14	0.09
63	9.5	40	36.5	54.5	63	G ¼ B	51	14	0.20

Standard pressure entry with parallel thread and seating to EN 837-3 / 7.3.

Ordering information

State:

Model / Nominal size / Scale range / Size and location of connection / Optional extras required



INGENIEROS ASOCIADOS DE CONTROL S.L.

Tel.: 913831390
comercial@iac-sl.es