

PS-E, PS-EH, and PS-EV Series— Economical Miniature Pressure Switches

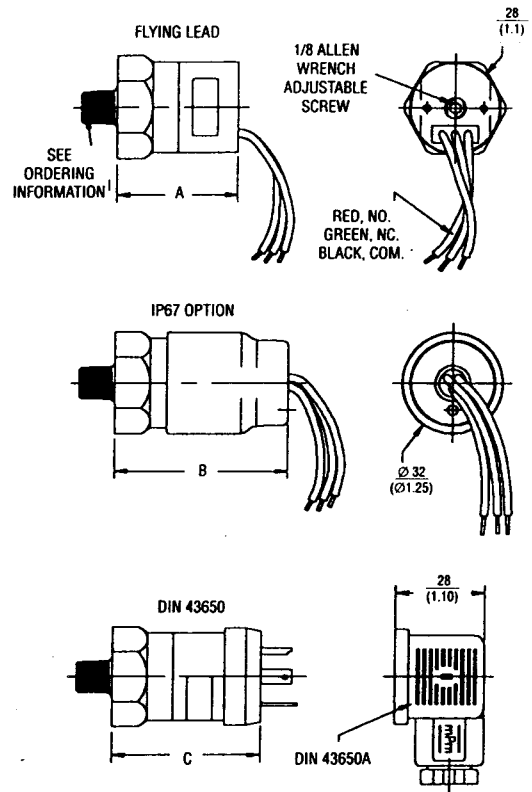
- ▶ Vacuum to 350 bar (5000 PSI)
- ▶ High Proof Pressures
- ▶ Variety of Pressure Ports and Lead Wires

The Gems PS-E Series are designed for demanding applications where space and/or price are strong concerns. The switches utilise a piston/diaphragm design, which incorporates the high proof pressure of piston technology with the sensitivity of diaphragm designs. The switches can be field or factory set by a hidden Allen head adjustment that ensures against unauthorized tampering.

Specifications

Process/Ambient Temperature	-40°C to +80°C (-40°F to +176°F)
Switch	5 Amp, SPDT@120/240 VAC and 12/24 VDC (>2 million cycles)
Approvals	Microswitch is UL and CSA Recognised
Repeatability	2% of Highest Set Point @ 20°C (68°F)
Wetted Parts	
Diaphragm	Buna-N (Optional EPDM or Viton®)
Fitting	Zinc-Plated Steel (Optional SS or Brass)
Electrical Termination	IP65 (Nema 4) DIN 43650A, or 18" (0.5m) Long, 18 AWG (0.82mm ²) PVC Jacketed Lead Wires (Optional IP67 Submersible Lead Wires)
Pressure Port	G or 1/4" NPT Male (E Series Also Features 1/8" NPT Male) (E, EH Also Available in 7/16"-20)
Proof Pressure	PS-E, EV 350 psi (25 bar) PS-EH 9000 psi (600 bar)
Weight, Approximate	0.3 lbs. (0.14 kg)

Dimensions mm (in)



How To Order

Use the Bold characters from the chart below to construct a product code.

SELECT PS -E -1 -4G -C -HC -X

- Series
-E low pressure; -EH high pressure; -EV vacuum
- Insert Range Code From Table Below
- Pressure Port
-4M 1/4" NPT male; -4G G 1/4 male; -4S 7/16-20" UNF male
- Circuit
-C SPDT; -B SPST/NC; (-A and -B options pertain to -FL versions)
- Electrical Terminations
-FL flying leads; -FLWL flying leads w/weather pack connector; -H DIN male only; -HC DIN connector w/strain relief; -HN DIN connector w/1/2" conduit
- Options
-1 Viton® diaphragm; -2 EPDM diaphragm; -3 304 ss on 1/4" ports; -4 brass for 1/4" ports (**); -7 gold electrical contacts; -9 reduced deadband; -B oxygen cleaned; -20 IP67 submersible (*);

Note: (+) For factory-set units specify set points and units followed by -R for rising or -F for falling
Example: PS-E-50psi-R-4M-A-FL (50psi, Rising, 1/4" NPT, Normally Open Switch, Leads)
 (*) submersible option requires wire leads and factory preset set points (units are not field adjustable)
 (**) PS-E, EV only

Series	Dimension mm (ins)		
	A	B	C
PS-E; PS-EV	36 (1.50")	55 (2.16")	47 (1.85")
PS-EH	44 (1.73")	61 (2.39")	53 (2.08")

Series	Range Code	Adjustable Range	Average Dead Band
PS-E Pressure Switch	-1	0.2-0.5 bar 3-7 psi	70-140 mbar 1-2 psi
	-2	0.35-2 bar 5-30 psi	140-280 mbar 2-4 psi
	-4	2-7 bar 25-100 psi	210-850 mbar 3-12 psi
PS-EV Vacuum Switch	-1	150-500 mbar 5-15" Hg	100-150 mbar 3-5" Hg
	-2	400-925 mbar 12-28" Hg	100-200 mbar 3-6" Hg

Series	Range Code	Adjustable Range	Average Dead Band
PS-EH High Pressure Switch	-1	0.2-0.5 bar 10-30 psi	70-140 mbar 4-6 psi
	-2	1.5-5 bar 25-75 psi	0.35-0.65 bar 5-10 psi
	-3	4-20 bar 65-300 psi	1.3-2.6 bar 20-40 psi
	-4	17-70 bar 250-1000 psi	2.6-5.7 bar 40-85 psi
	-5	70-210 bar 1000-3000 psi	8-15 bar 120-220 psi
	-6	170-350 bar 2500-5000 psi	21-28 bar 300-400 psi



INGENIEROS ASOCIADOS DE CONTROL S.L.

Tel.: 913831390
comercial@iac-si.es

PRESSURE SWITCHES