

Thermometers

Model 50

Service intended

General purpose industrial thermometer

Nominal size

63, 80, 100 and 160 mm

Temperature element

Coiled bimetal

Bulb

Stem with detaching thermowell (screw-retained)

Accuracy

Class 2 per DIN 16 203

Working range

Maximum scale value

Pressure rating of thermowell

6 bar maximum

Standard features

Location of stem

63, 80, 100 and 160 mm: centre back

Case material

Aluminium (with centre back stem only)

Connection

Thermowell G ½ A, Cu-alloy

Thermowell

Length $l_1 = 40, 60, 100, 160$ and 200 mm
(centre back stem)

Material Cu-alloy

Dial

White aluminium with black lettering

Pointer

Black aluminium

Window

Acrylic plastic

Zero adjustment

At bottom of stem (with centre back stem only) ¹⁾

Optional extras

- Other scale ranges
- Scale °F
- Other connections



Scale ranges

Scale range °C	Scale spacing °C
- 30 ... + 50	1
- 20 ... + 60	
- 10 ... + 50	
0 ... 60	
0 ... 80	2
0 ... 120	
0 ... 160	
0 ... 200	5

Models

Model	Nominal size	Location of stem
A 5000	63	Centre back
A 5001	80	
A 5002	100	
A 5003	160	

Special versions

Service thermometer for flue gas

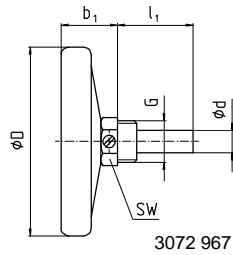
Model	NS	Scale range °C	Connection
A 5020	63	0 ... 500	Plain stem without thread
A 5021	80	0 ... 500	Plain stem without thread
A 5050	63	0 ... 400 colour markings, drag pointer	Plain stem with magnet
A 5051	63	0 ... 400 colour markings, drag pointer	Plain stem with taper thread

1) Adjustable pointer with model A 5020 up to model A 5051

Dimensions

Standard version

Location of stem: centre back



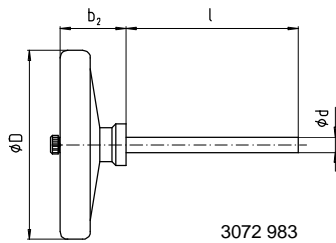
Nominal size	Dimensions in mm											Weight in kg			
	a	b ₁	b ₂	Ø d	d ₁	Ø	F	G	l ₁	SW	SW ₁	back entry	bottom entry		
63	-	23	-	12 ²⁾	-	63	-	G ½ A	40 ¹⁾	21	-	0.080	-		
80	-	25	-			80						0.100	-		
100	21	30	48		13	100	84					100	24	0.130	0.400
160	-	32	-		-	160	-					160	200	-	0.275

1) l₁ = 40 mm with back entry only

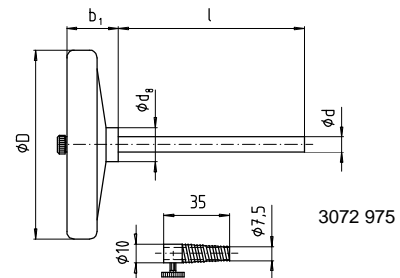
2) Ø d = 11 mm with thermowell length l₁ ≥ 100 mm

Service thermometer for flue gas

Plain stem with magnet



Plain stem with taper thread



Nominal size	Dimensions in mm						Weight in kg
	b ₁	b ₂	Ø d	d ₈	Ø D	l	
63	22	29	6	18	63	100	0.100
80	24	-			80		0.120

Ordering information

State: Model / Nominal size / Scale range / Connection / Length l or l₁ / Optional extras required



INGENIEROS ASOCIADOS DE CONTROL S.L.

Tel.: 913831390
comercial@iac-sl.es