

# Bimetal Thermometers

## Extra Quality Series • Model 52

### Thermometers

#### Service intended

Versatile thermometers for machine and plant engineering, piping, pressure vessels and industrial heating

#### Nominal size

63, 80, 100 and 160 mm

#### Temperature element

Coiled bimetal

#### Accuracy

Class 1 per DIN 16 203

#### Working range

Permanent: measuring range per DIN 16 203

Short time ( $\leq 1$  h): 1.1 x measuring range per DIN 16 203

#### Weather protection

IP 43 per EN 60 529 / IEC 529

#### Standard features

##### Location of stem

63, 80, 100 and 160 mm: centre back

100 and 160 mm: also radial bottom

##### Case material

Stainless steel

##### Bezel ring

Stainless steel

##### Connection

Plain stem with shoulder to fit thermowell

##### Stem

8 mm diameter, stainless steel

##### Dial

Satin finish aluminium with black lettering, fine graduation

##### Pointer

Adjustable black aluminium pointer

##### Window

Instrument glass

#### Accessories to be separately ordered

##### Thermowell with retainer screw

Thread: G  $\frac{1}{2}$  A

Material: Cu-alloy, carbon or stainless steel 1.4571

Length  $l_1 = 45, 63, 100, 160, 200$  mm (max. 500 mm), diameter 10 mm or

##### Welding neck thermowell

Material: carbon or stainless steel 1.4571

Length  $l_2 = 43, 80, 140, 180$  mm (max. 480 mm), diameter 10 mm

##### Pressure rating of thermowell

Cu-alloy: 6 bar maximum

Carbon or stainless steel: 25 bar maximum

#### Optional extras

Other scale ranges, graduation other than  $^{\circ}\text{C}$ , 2nd scale

Other connections



#### Scale ranges

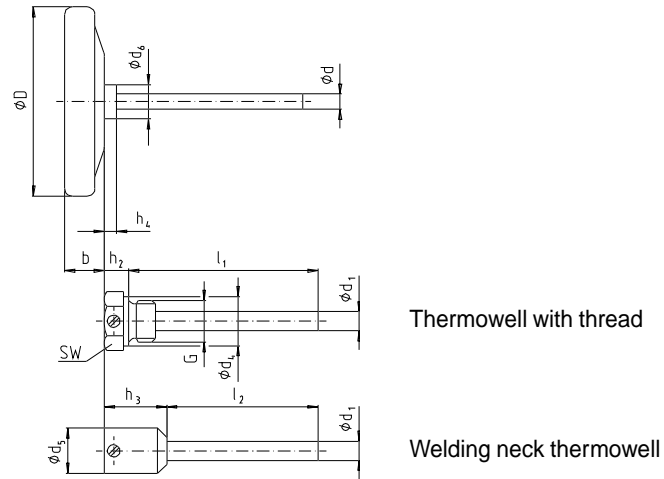
Scale range $^{\circ}\text{C}$	Scale spacing $^{\circ}\text{C}$
- 30 ... + 50	0.5
- 20 ... + 60	
0 ... 60	
0 ... 80	
0 ... 100	1
0 ... 120	
0 ... 160	
0 ... 200	2
0 ... 250	

#### Models

Model	Nominal size	Location of stem
A 5207	63	Centre back
A 5208	80	
A 5209	100	
A 5210	160	
R 5216	100	Radial bottom
R 5217	160	

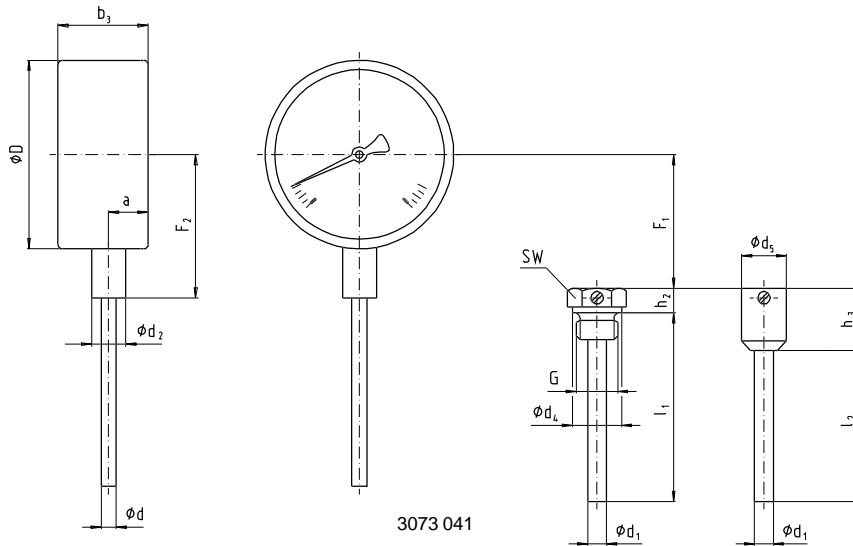
## Dimensions

Location of stem: centre back



3073 033

Location of stem: radial bottom



3073 041

Nominal size	Dimensions [mm]															Weight [kg]	
	a	b	b <sub>3</sub>	d	d <sub>1</sub>	d <sub>2</sub>	d <sub>4</sub>	d <sub>5</sub>	D	F <sub>1</sub>	F <sub>2</sub>	G	h <sub>2</sub>	h <sub>3</sub>	SW	back entry	bottom entry
63	-	16	-	-	-	-	-	-	63	-	-	-	-	-	-	0.100	-
80	-	17	-	-	-	-	-	-	80	-	-	-	-	-	-	0.120	-
100	16	21	48	8	10	18	26	24	100	70	78	G ½ A	13	33	27	0.150	0.380
160		25							160	100	108					0.300	0.750

## Ordering information

State: Model / Nominal size / Scale range / Location of connection / Thermowell (type and material) / Length of stem l<sub>1</sub>, l<sub>2</sub> /  
Optional extras required

Specifications and dimensions given in this leaflet represent the state of engineering at the time of printing.  
Modifications may take place and materials specified may be replaced by others without prior notice.



INGENIEROS ASOCIADOS DE CONTROL S.L.  
Telf.: 913831390  
comercial@ac-sl.es